

MONTHLY MEMBERSHIP PROGRESS REPORT

District 307B2

Results as of: 12/31/2023

GMT:

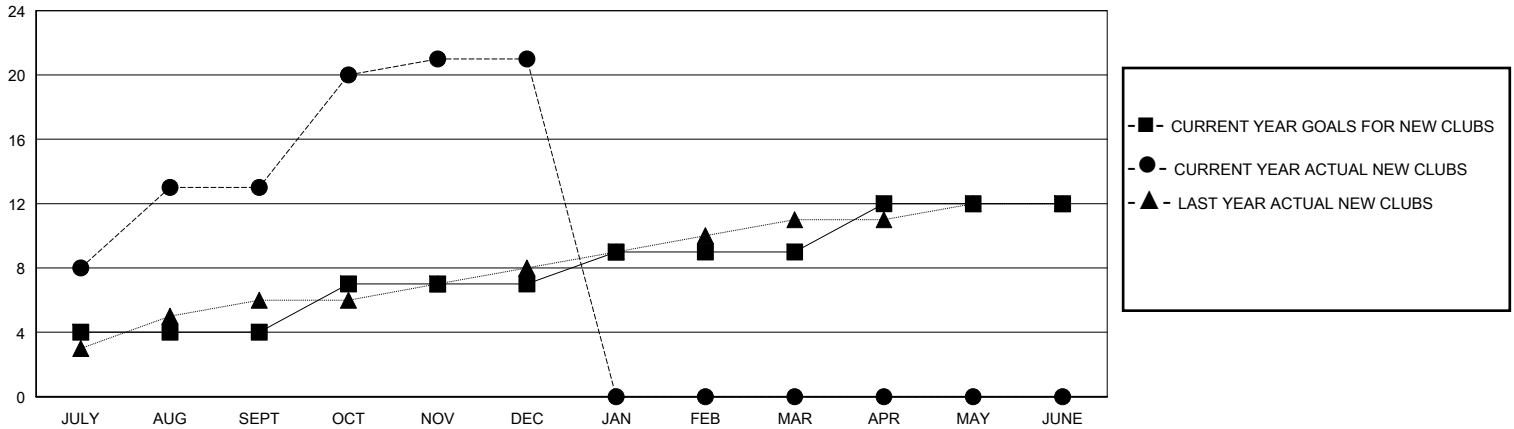
LOCATION INDONESIA

GMT CA

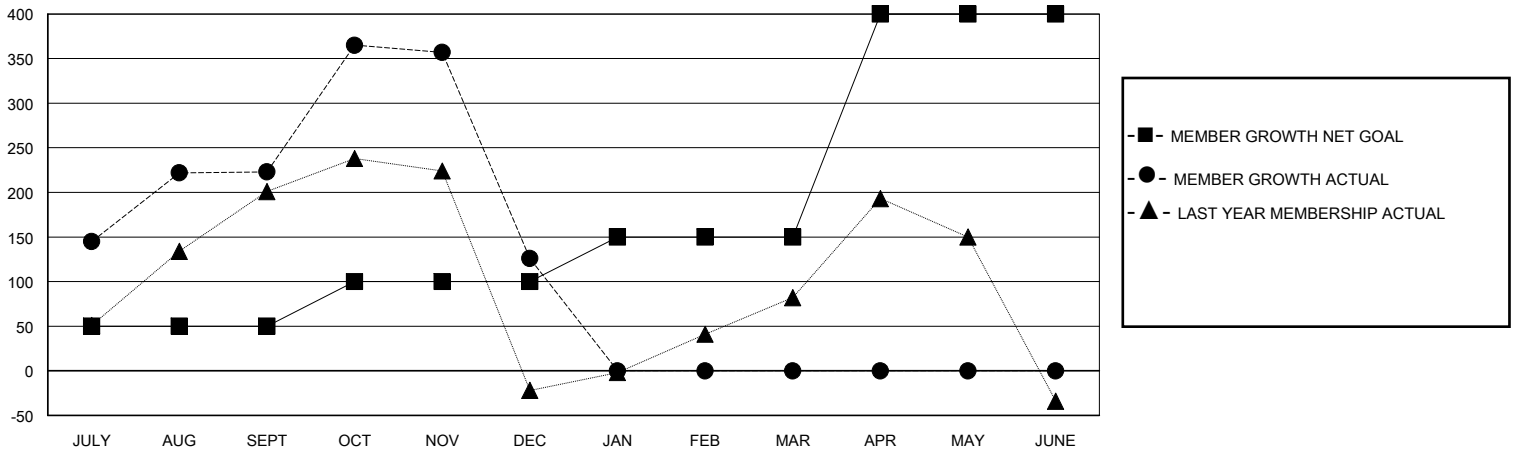
Clubs			
RESULTS FOR 2023-2024			
QUARTER	NEW CLUB GOAL	NEW CLUBS	DROPPED CLUBS
JULY/AUG/SEPT	4	13	2
OCT/NOV/DEC	3	8	1
JAN/FEB/MAR	2	0	0
APR/MAY/JUNE	3	0	0

Members			
RESULTS FOR 2023-2024			
QUARTER	MEMBER GROWTH NET GOAL	MEMBER GROWTH ACTUAL	DROPPED MEMBERS ACTUAL (including transfers)
JULY/AUG/SEPT	50	371	134
OCT/NOV/DEC	50	290	381
JAN/FEB/MAR	50	0	0
APR/MAY/JUNE	250	0	0

GOALS AND ACTUAL NEW CLUBS CUMULATIVE



GOALS AND ACTUAL MEMBERS CUMULATIVE



DROPPED CLUBS: 3

60 CLUBS OF 123 ADDED 1 OR MORE NEW MEMBERS

GENDER DISTRIBUTION

MALE 1,258 (35.68%)
FEMALE 2,264 (64.21%)

DROPPED MEMBERS

DECEASED	5
CLUB CANCELLED	34
OTHER	476
TOTAL	515

[CLICK HERE FOR CUMULATIVE MEMBERSHIP DATA](#)

TOTAL FAMILY UNIT MEMBERS	694
FAMILY MEMBERS PAYING HALF DUES	376